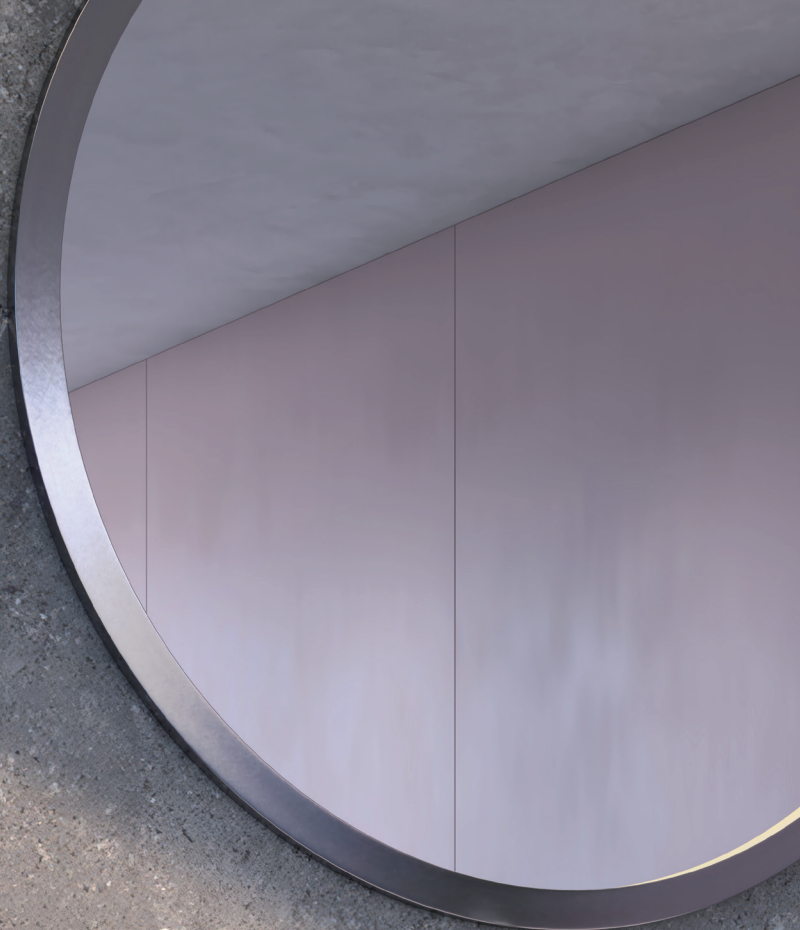


BOARD

Waterproof wall panel system





# The Selkie Range

## *Elevate Your Bathroom with Style and Ease*

Selkie is the ultimate solution for bathroom fitters, DIY enthusiasts and individuals looking for a stylish and convenient way to renovate a bathroom. These luxurious panels combine a laminate faced decorative surface with a sturdy Exterior MDF, wood core. Manufactured in Scotland to the highest standards, Selkie Board offers a wide variety of stunning finishes to enhance the beauty of your bathroom.

Selkie panels are manufactured by our team of highly skilled crafts workers at Rearo, a family run-business, with over 31 years' of experience specialising in kitchen and bathroom surfaces. The range is named after the Selkie, a beautiful mermaid like mythological creature in Scottish folklore, associated with the Northern Isles of Shetland, where Rearo was founded.

One of the standout features of Selkie is the exceptional versatility. No matter how challenging your space may be, these panels can easily adapt with the help of custom-made trims. Whether you prefer a Tongue & Groove or Square Edge, the panels can be joined together using sealant or a combination of trims and sealant, creating a watertight seal and a leak-free bathroom.

Here are the key benefits of Selkie Shower Panels:

- **100% Waterproof System:**

Ensuring a durable and long-lasting solution for your bathroom.

- **Made in Britain:**

Selkie Board is a British-made product, manufactured in Scotland and embodying craftsmanship and excellence.



- **10-Year Guarantee:**

Enjoy peace of mind with our comprehensive 10-year guarantee, assuring you of the panels' durability and reliability.

- **Minimal Maintenance:**

With Selkie Shower Panels, maintaining a pristine bathroom is a breeze. Say goodbye to the hassles of grout cleaning and enjoy a low-maintenance surface.

- **Easy Installation:**

Compared to traditional methods such as tiling, installing Selkie shower panel products is quick and hassle-free. They can also be installed over existing tiles. Our complete panel system simplifies the process, saving you time and effort.

Suited for use in bathrooms, shower areas, and wet rooms, these waterproof panels offer a modern and stylish alternative to traditional tiles. Choose from a variety of laminate finishes that cater to your personal style and preferences. In addition, all Selkie products come with a class 2 fire rating as standard, ensuring safety and peace of mind.

To further enhance your installation experience, we provide a range of complementary installation aids. These aids ensure a professional-looking finish, adding the final touch of excellence to your bathroom transformation.







A modern bathroom interior. On the left, a large window with a black frame looks out onto greenery. Below the window is a wooden shelf holding several wicker baskets, a small white dog figurine, and some candles. A potted plant with green leaves is in the foreground on the left. The wall behind the bathtub is covered in large, dark grey tiles with white marble veins. The bathtub is a sleek, white, freestanding model. The floor is made of light-colored wood-look planks. Sunlight streams in from the window, casting shadows on the wall and floor.

Elevate your bathroom with Selkie B  
– the perfect blend of style, functionality, and ease of installation.





e Board

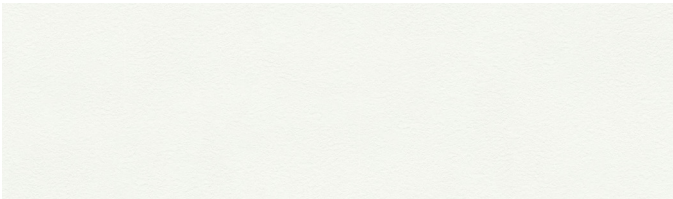
Gransasso



# The Decor Range

## Serene Collection

Our core range of decors are chosen to provide a calm, fuss free canvas. Whether you create a minimalist space that is serene and relaxing or set the tone for a feature wall, you'll find our core range a great starting point for any project



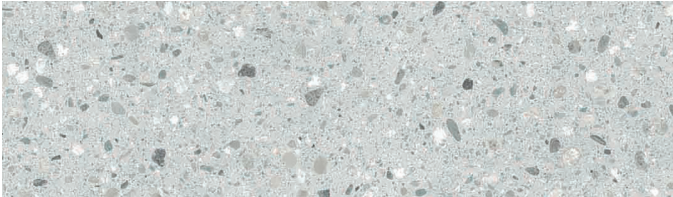
(T)

Cotton



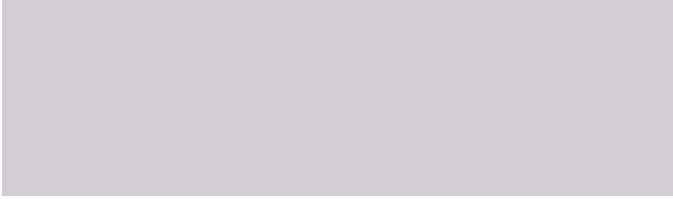
(M)

Eclipse Grey



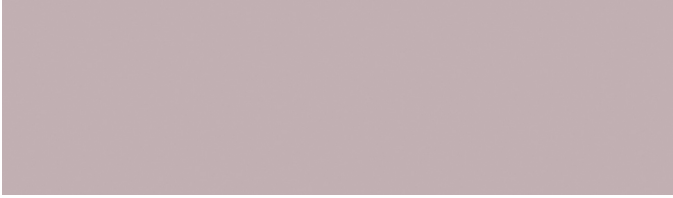
(M)

Pebble Stone



(M)

Ash



(M)

Rosewater



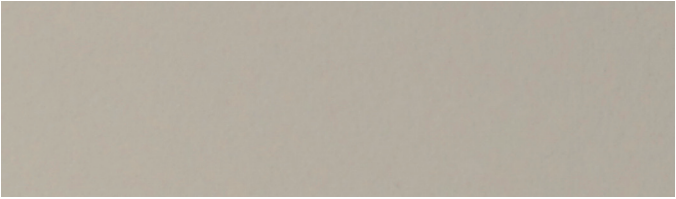
(M)

Periwinkle



(M)

Sage



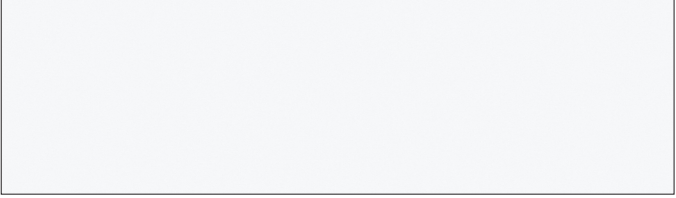
(M)

Oatmeal



(G)

Nordic Pearl



(G)

Premium White Gloss







# Allure Collection

Want to create an attractive space with an element of surprise or simply create a theme that suits the style of your home, this diverse range could provide the allure you're hoping for.



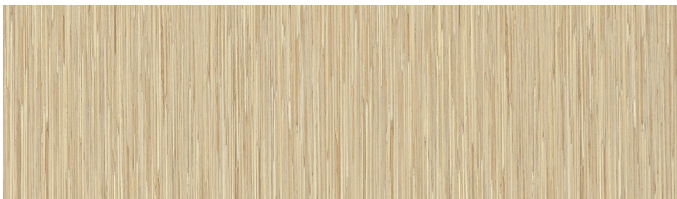
(M)

German Chalk



(G)

Zaffiro



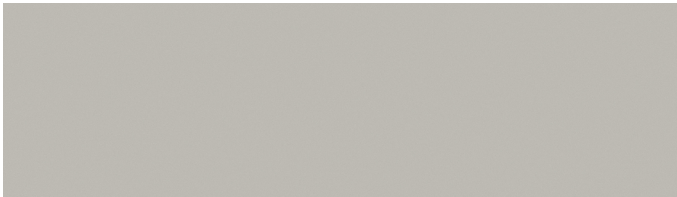
(M)

Bamboo



(T)

Linea Grey



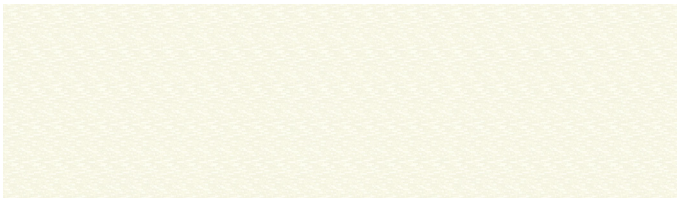
(G)

Silver Pearlescent



(M)

Gransasso



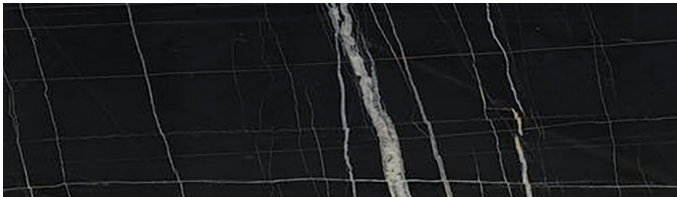
(S)

Oyster Pixel



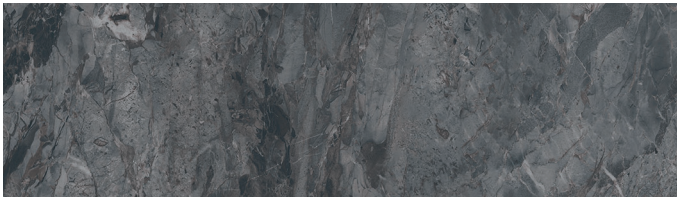
(M)

Golden Fudge



(M)

Palazzo



(G)

Tempest Marble

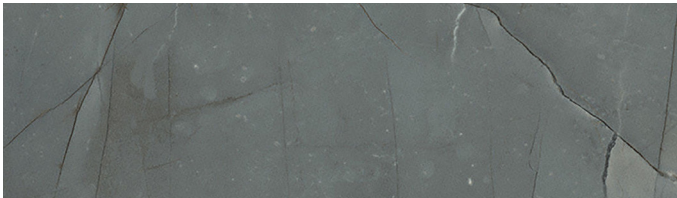


# Inspire Collection

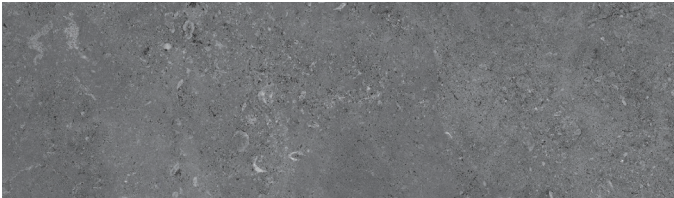
Achieve your must have bathroom that's the envy of your friends. This range of decors provide the inspitation or element of bling you were looking for whether it's a feature walls or overall statement room.



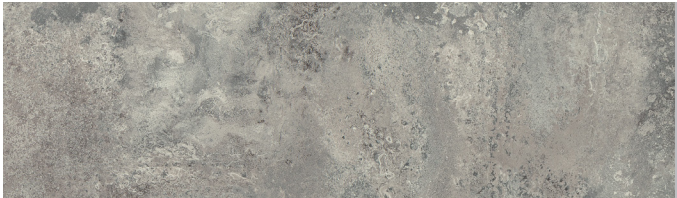
(T) Egyptian Sand



(M) Sicilian Marble



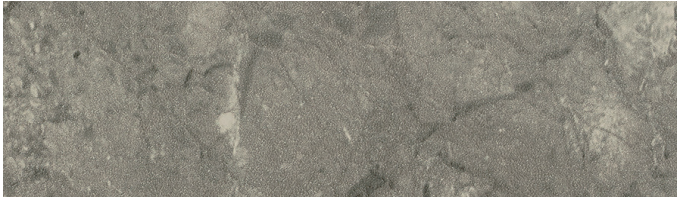
(T) Cairn Stone



(T) Textured Concrete



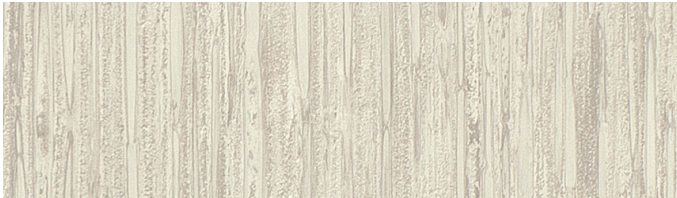
(M) Ivory Sky



(G) Persian Grey



(M) Portofino



(T) Silver Rain



(G) Calacatta Marble



(T) Travertine Rain





Textured Concrete • Ivory Sky





Egyptian Sand • Cotton



Bamboo • Premium White Gloss









# How it works

Selkie board is a laminate faced decorative shower panel with an exterior grade MDF core. Available in either a Square Edge or Tongue & Groove, panels can either be slotted together with the use of sealant or instead through a combination of trims and sealant to form a watertight seal within your bathroom.

## Technical Specification

Height	2420mm
Width	Square Edge 1200mm Tongue & Groove 1180mm
Thickness	11mm
Jointing	Square edge Tongue and Groove
Fire Rating	Class 2 surface spread of flame, as standard BS476 part 7



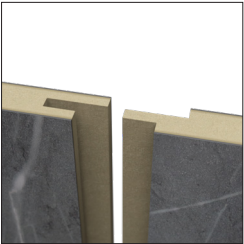
## Which edge should I select for my project?

Square edge panels are clean cut and must be joined via trims (found within our bathroom accessories section), these are most typically used to complete shower areas.

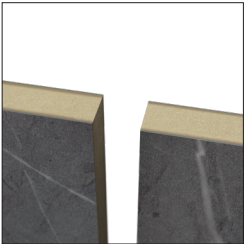
Meanwhile, Tongue and Grooved panels are designed to slot into each other, allowing for panels to be applied to larger wall spaces creating an inconspicuous join.

*Please note:* During a Tongue & Groove panel installation, it is recommended that Selkie colour match sealant is used on all joints.

Tongue & Grooved



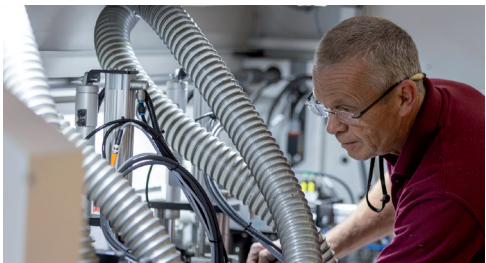
Square Edge



## About Rearo

A leading specialist in the supply and manufacture of bathroom and kitchen surfaces within the UK, Rearo is a family run business which has operated in the market since 1991. Rearo products are crafted by hand within a Govan-based, 67,000 sq.ft manufacturing premises. Rearo's team of highly skilled craftsmen ensure every item is completed to the highest standards by performing rigorous internal quality checks.

In addition to Selkie panels, Rearo also manufacture toilet cubicle systems, vanity units and IPS for commercial premises. Rearo supplies worktops, vinyl click flooring and other wall lining systems. These ranges are specified on major development projects across the UK and the company has branches in Glasgow, Northampton, Rosyth, Skelmersdale and Washington.





## Installation

Supplied as a complete panel system, the installation of any Selkie shower panel product is both quick and easy, in comparison to other traditional methods. As well as our boards, we offer a range of complementary installation aids to ensure a professional looking finish. All products listed are in-stock and available to buy. An installation guide is supplied within the packaging of all Selkie panels. The guide can also be easily downloaded from our website.

### Selkie Panel Adhesive and Silicones

Designed to last, Rears's shower panel adhesive and silicones bring confidence when bonding panels to horizontal walls or joining boards.

Drying in a matter of minutes, these products have flexible characteristics, this product accommodate both thermal expansion and vibrations without causing any damage to your wall or the panel bond.

Available to buy as single 300ml tubes or in a multipack box of 12.



### Selkie Panséal Trim

An aesthetic join between the board and shower tray, panels simply rest in a slightly raised position within the trim, whilst the pre-applied silicone bond-breaker is placed below and forms a protective barrier. Not only does this avoid the deterioration of silicone, due to soaps and temperature fluctuations, but also allows for substantial joint movement between the wall and shower tray or bath ledge, without leakage.

The Panséal trim is available in 1.8m lengths.



### Selkie TopSeal Colour Match Sealant

Produced bespoke for Rears, our range of colour match sealants has been scientifically formulated and tested to resist moisture, detergent, and other household products.

Sealant is available to buy as singular 290ml tubes. One tube of sealant will cover the installation of approximately 5x Tongue & Groove Selkie shower panels.

Please note, this product is only recommended for application to the Tongue & Groove joint.



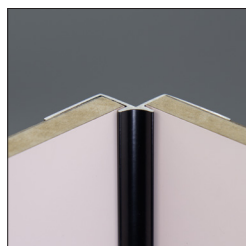
### Selkie Panel Trims

To suit a variety of bathroom shapes, we stock a range of panel trims to assist in the cladding of an area. Select from our range of internal and external corners, as well as end caps and H-sections.

All trims are available in either a black or white powder coated finish, as well as Satin Aluminium or Polished Chrome and are supplied individually in lengths of 2420mm.

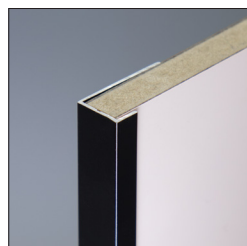
Our Selkie Installation Guide, including both Square Edge and Tongue & Groove instructions, can be downloaded directly from [www.rearo.co.uk](http://www.rearo.co.uk).

#### Internal Corner



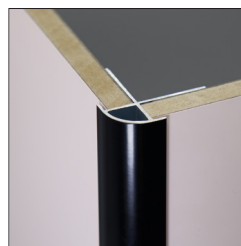
Mainly found within shower enclosures, our Selkie **Internal Corner Trim** is used as a connection between two panels in inward facing corner areas.

#### End Cap



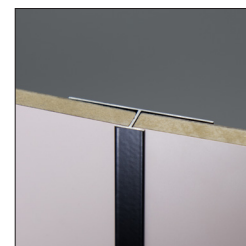
An essential part in any Selkie shower panel installation, **End Caps** are used to finish any exposed board edges.

#### External



For those planning on a full bathroom installation, our Selkie **External Trim** caters to outward facing corner areas.

#### H- Section



Join square edge shower panels together easily with the use of our **H-Section Trim**. Boards are simply slotted into position.







# Production – Made in Britain

We are proud to manufacture every Selkie panel within our 67,000 sq ft premises in Govan, Glasgow. Our skilled workforce undertakes rigorous quality control checks to ensure our customers receive only the highest quality items.

In addition to our commitment to quality, we are honoured to be a part of the Made in Britain network.



# Sustainability

As a UK based manufacturer, we are working collectively with **Zero Waste Scotland** to actively improve the sustainable development of our practices, actively reducing the waste we generate and re-purposing that which is created.

Within our Glasgow Manufacturing facility, more than 90% of our waste is now recycled or reused.

Our recycled waste, including our wood by-products and laminates, are re-purposed for use in children's play areas, decorative landscaping or equestrian bedding, as well as our online sample service.



# Further Information

## Samples

Rearo offers a free sampling service on our full range of Selkie décors and trims. Simply request directly on our product pages at [www.rearo.co.uk](http://www.rearo.co.uk) or alternatively please email [sales@rearo.co.uk](mailto:sales@rearo.co.uk) with your request.

**All sample orders and typically delivered within 7 days.**

## Maintenance

Selkie Board is easily maintained with the use of a damp cloth and mild detergent. For the best use of your panels, we recommend rinsing the surface of soap residue after every shower to prevent any build-up.

Do not apply bleach or use any other abrasive cleaners, and do not use any scouring type cloths as these could scratch the decorative surface.



## Customer Service

Rearo has a dedicated customer service team available to answer your Selkie related queries weekdays.

8am – 4:30pm (Mon – Thurs)		8am – 3:30pm (Friday).
-------------------------------	--	---------------------------

You can contact us via email: [sales@rearo.co.uk](mailto:sales@rearo.co.uk) or alternatively phone: 0141 440 0800.

## Collect from branch or Home Delivery

With a branch network throughout the UK and dedicated warehousing facilities, we can offer a collection or delivery service of Selkie from each of our locations.

*\*Stock levels of certain décors may vary.  
Please contact branches before visiting; a member of our team will be pleased to advise.*

See the back cover for your nearest Rearo showroom location.





# REARO®

HOME SURFACES

## GLASGOW HQ

Loanbank House, Loanbank Quadrant, Govan, Glasgow G51 3HZ

**T:** 0141 440 0800

**E:** sales@rearo.co.uk

## NORTHAMPTON

5 Rye Hill Close  
Britannia Trade Park  
Northampton  
NN5 7UA

**T:** 01604 212 559

**E:** northampton@rearo.co.uk

## ROSYTH

Unit 15 & 16 Primrose Lane  
Dunfermline Business Park  
Rosyth  
KY11 2RN

**T:** 01383 414 000

**E:** rosyth@rearo.co.uk

## WASHINGTON

Unit 15, Tilley Road,  
Crowther Industrial Estate  
Washington, Tyne & Wear  
NE38 0AE

**T:** 0191 482 2298

**E:** washington@rearo.co.uk

## SKELMERSDALE

Crawford Rd  
Crawford  
Skelmersdale  
WN8 9QP

**T:** 01744 882000

**E:** skelmersdale@rearo.co.uk

[www.rearo.co.uk](http://www.rearo.co.uk)