

senses

KITCHEN WORKTOPS

A style choice



REARO[®]
HOME SURFACES





Senses by Rearo offers a range of distinct work surface designs

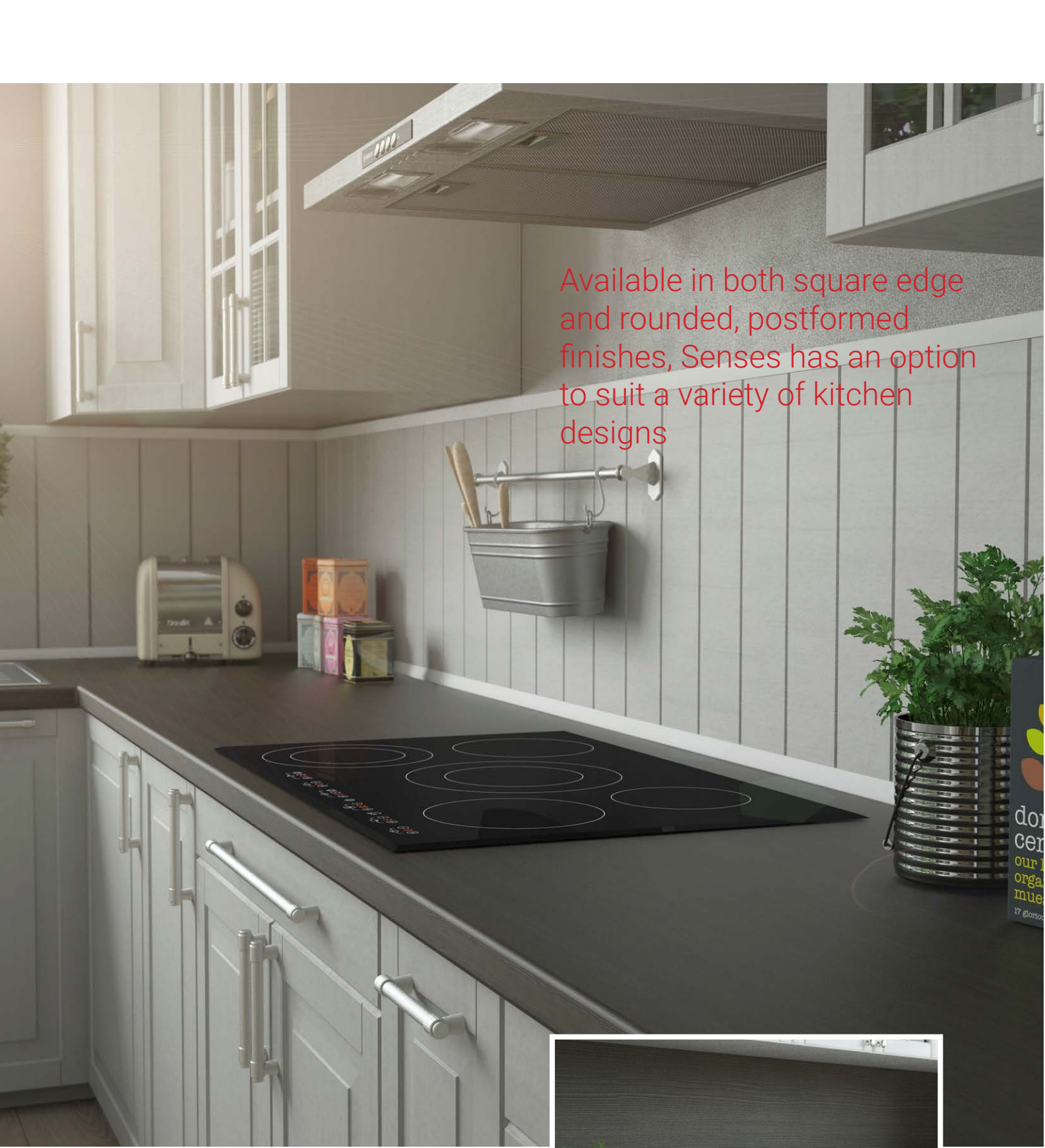
From soft matt marbles, to textured woods and gloss finishes, we provide the perfect solution for your kitchen.

Built around our in-house design team's forecasting knowledge, your next kitchen will not only be inspiring, but will also stand the test of time.

All Senses products are produced in the UK, to the highest standards, with a 10-year guarantee.

Rearo promises both quality and great value.





Available in both square edge and rounded, postformed finishes, Senses has an option to suit a variety of kitchen designs

Each Senses décor can be complemented by matching splashback and upstand options, ensuring a sleek finish to your kitchen.



Square Edge Décors



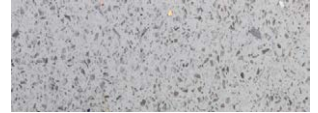
Carrara Marble



Grey Fleck



White Fleck



Terrazzo Stone



Limestone



Rustic Wood



Slate Stone



Industrial Stone

Sizes and Finish

DECOR	WORKTOP / BREAKFAST BAR SIZES	FINISH	UPSTAND SIZE	SPLASHBACK SIZES
Carrara Marble	3600x600x28 / 3000x900x28 (mm)	Matte	3000x100x20 (mm)	3000x1200x11 / 3000x600x11 (mm)
Grey Fleck	3600x600x28 / 3000x900x28 (mm)	Matte	3000x100x20 (mm)	3000x1200x11 / 3000x600x11 (mm)
White Fleck	3600x600x28 / 3000x900x28 (mm)	Matte	3000x100x20 (mm)	3000x1200x11 / 3000x600x11 (mm)
Terrazzo Stone	3600x600x28 / 3000x900x28 (mm)	Gloss	3000x100x20 (mm)	3000x1200x11 / 3000x600x11 (mm)
Limestone	4050x600x25 / 4050x900x25 (mm)	Matte	3000x100x20 (mm)	3000x1200x11 / 3000x600x11 (mm)
Rustic Wood	4050x600x25 / 4050x900x25 (mm)	Matte	3000x100x20 (mm)	3000x1200x11 / 3000x600x11 (mm)
Slate Stone	4050x600x25 / 4050x900x25 (mm)	Textured	3000x100x20 (mm)	3000x1200x11 / 3000x600x11 (mm)
Industrial Stone	4050x600x25 / 4050x900x25 (mm)	Matte	3000x100x20 (mm)	3000x1200x11 / 3000x600x11 (mm)

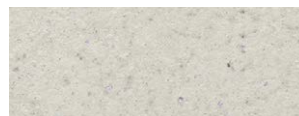
Postformed Décors



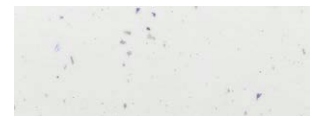
Carrara Marble



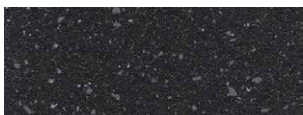
Avola Grey Woodgrain



Pure Essence



Pure Sparkle



Noir Essence



Noir Sparkle



Terrazzo Stone



Graphite Sparkle

Sizes and Finish

DECOR	WORKTOP / BREAKFAST BAR SIZES	FINISH	UPSTAND SIZE	SPLASHBACK SIZES
Carrara Marble	3600x600x38 / 3000x900x38 (mm)	Matte	3000x100x20 (mm)	3000x1200x11 / 3000x600x11 (mm)
Avola Grey Woodgrain	3600x600x38 / 3000x900x38 (mm)	Textured	3000x100x20 (mm)	3000x1200x11 / 3000x600x11 (mm)
Pure Essence	3600x600x38 / 3000x900x38 (mm)	Textured	3000x100x20 (mm)	3000x1200x11 / 3000x600x11 (mm)
Pure Sparkle	3600x600x38 / 3000x900x38 (mm)	Gloss	3000x100x20 (mm)	3000x1200x11 / 3000x600x11 (mm)
Noir Essence	3600x600x38 / 3000x900x38 (mm)	Textured	3000x100x20 (mm)	3000x1200x11 / 3000x600x11 (mm)
Noir Sparkle	3600x600x38 / 3000x900x38 (mm)	Gloss	3000x100x20 (mm)	3000x1200x11 / 3000x600x11 (mm)
Terrazzo Stone	3600x600x38 / 3000x900x38 (mm)	Gloss	3000x100x20 (mm)	3000x1200x11 / 3000x600x11 (mm)
Graphite Sparkle	3600x600x38 / 3000x900x38 (mm)	Gloss	3000x100x20 (mm)	3000x1200x11 / 3000x600x11 (mm)

New to our Senses range, these ultra thin, modern and stylish solid grade laminate worktops represent the contemporary kitchen

Composed of several layers of compressed laminate, the core and surface have superior performance characteristics against heat and water.

Available in the following measurements:
4100 x 640 x 12mm and 4100 x 900 x 12mm



Features

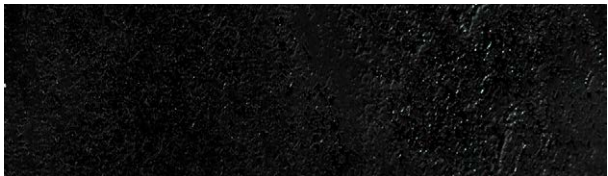
- Impact resistant
- Higher resistance to scratches
- Low reflectivity to light
- Easy to clean
- Higher heat resistance
- Hygienic
- Suitable for contact with food
- 100% waterproof
- No edging required (finished on 3 sides)



Solid Grade Décors



White Slate



Black Slate



Marble Slate



Grey Slate

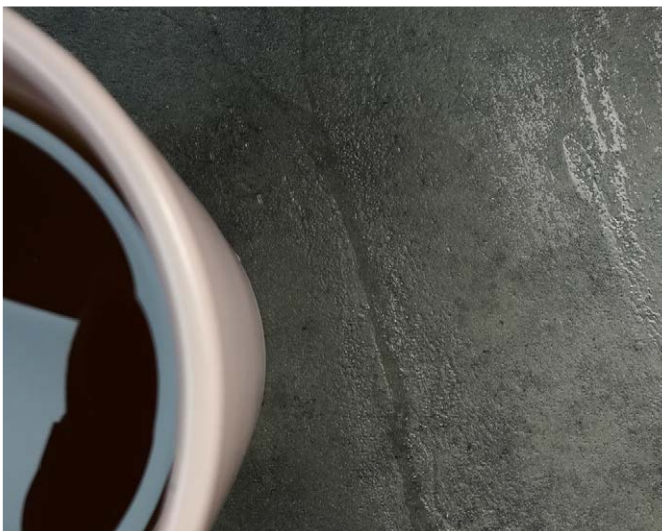
Sizes and Finish

DECOR	WORKTOP / BREAKFAST BAR/ UPSTAND SIZES	FINISH / CORE
White Slate	4100x640x12 / 4100x900x12 / 4100X100X12 (mm)	Textured / White Core
Black Slate	4100x640x12/ 4100x900x12 / 4100X100X12 (mm)	Textured / Black Core
Marble Slate	4100x640x12 / 4100x900x12 / 4100X100X12 (mm)	Textured / White Core
Grey Slate	4100x640x12 / 4100x900x12 / 4100X100X12 (mm)	Textured / Black Core



Custom Solution

All solid laminate core worktops are also available in bespoke sizes and shapes to order.
(max dim. 4100x1200x12mm)



Our custom solution also includes:

- Sink Cut outs
- Top Cut outs & drainage grooves
- Jointing Kits



REARO®

HOME SURFACES

**Loanbank House, Loanbank Quadrant,
Glasgow, G51 3HZ**

T: 0141 440 0800
F: 0141 445 3342
E: sales@rearo.co.uk
www.rearo.co.uk

Rearo Northampton

5 Britannia Trade Park
Northampton
NN5 7UA

T: 01604 212559

E: northampton@rearo.co.uk

Rearo Rosyth

Unit 15 & 16 Primrose Lane
Dunfermline Business Park
Rosyth
KY11 2RN

T: 01383 414000

F: 01383 414400

E: rosyth@rearo.co.uk

Rearo Washington

Unit 15 Tilley Road
Crowther Industrial Estate
Washington Tyne & Wear
NE38 0AE

T: 0191 482 2298

F: 0191 482 6245

E: washington@rearo.co.uk



Maintenance & Care

for your Laminates Worksurfaces, Splashbacks and Upstands



CLEANING INSTRUCTIONS

There's nothing easier than cleaning and caring for your Worktop

A major advantage of these Worktops is that the HPL surface makes cleaning so simple. Usually a moist cloth is sufficient, but use washing-up liquid to get rid of any grease. Stubborn dirt can be removed with an organic solvent such as methylated spirits or alcohol. A brush with hard bristles (but not wire brushes) may also be used, but not on glossy worktops.

Cleaning Recommendations

Light Stains/Dirt

Dry or damp paper towels, a cloth or sponge

Normal Stains/Dirt

e.g. fat, oil and dirt particles, fingermarks, lime deposits, rust, juice, coffee, tea, wax, blood, universal marker etc.

With a cloth or soft nylon brush and washing powder, soft soap, toilet soap or washing-up liquid. If necessary, leave for a while and then rinse thoroughly with clean water.

Heavy Stains/Dirt

e.g. discolouration through long exposure to tea, coffee, fruit juice etc.

With washing powder and household bleach (but do not repeat too often).

e.g. lead pencil, felt-tip pens, marker and ball-point pens, lipstick, crayons, wax, shoe polish, nicotine, nail varnish.

With an organic solvent such as acetone (nail varnish remover), methylated spirits, petroleum spirit, perchloroethene. Read the manufacturer's instructions carefully!

e.g. paint (water or solvent based paints, two-component paints,

spray paints), varnish stains, printing ink

With water or organic solvent. Remove two-component paints immediately.

e.g. adhesives (water-based, dispersion)

With water or an organic solvent

e.g. two-component adhesives, urea resin, melamine, phenolic resin

Remove immediately. Do not allow to harden!

Cleaning and Caring for your Gloss Worktop

General cleaning of the surface requires only a damp cloth and a mild detergent or non-abrasive cleaner diluted in warm water.

Abrasive scouring powders, creams and even polishes should all be avoided. Potentially persistent stains should be removed immediately. Buff the surface after cleaning with a soft cloth.

ALWAYS USE A CHOPPING BOARD/WORKTOP SAVER. GLOSS WORKTOPS WILL SHOW SCRATCHING, CUTS, HEAT DAMAGE, MORE EASILY THAN A STANDARD FINISH WORKTOP.

- **ALWAYS AVOID PLACING HOT SAUCEPANS/KITCHEN UTENSILS DIRECTLY ONTO THE WORKTOP, ALWAYS USE A PROTECTIVE PAD/MAT (WORKTOP SAVER).**
- **ALWAYS AVOID CUTTING OR CHOPPING DIRECTLY ON THE WORKTOP. ALWAYS USE A PROTECTIVE MAT (WORKTOP SAVER).**
- **ALWAYS AVOID EXCESS WATER AROUND AREAS WHERE THERE ARE CUT JOINTS AND CUT OUTS AS THESE ARE POTENTIAL WEAK AREAS. WIPE AWAY EXCESS WATER IMMEDIATELY.**
- **DO NOT LEAVE ANY DAMP CLOTHS, SPONGES OR ANYTHING WET ETC. ON THE TOP FRONT EDGE, AS THIS TOP FRONT EDGE IS A POTENTIAL WEAK AREA TO WATER INGRESS.**

THIS WORKSURFACE IS FOR GENERAL DOMESTIC USE ONLY, AND SHOULD NOT BE USED IN A HIGH VOLUME MULTI USE COMMUNAL ENVIRONMENT

BEFORE FITTING : IF THIS WORKTOP HAS A PROTECTIVE FILM ON THE SURFACE, PLEASE PEEL BACK THE PROTECTIVE FILM TO CHECK FOR COLOUR MATCHING BEFORE COMMENCING INSTALLATION. IT CAN EASILY BE PUSHED BACK AFTER CHECKING THE MATCH AND BEFORE COMMENCING THE FIT. NO REFITTING CHARGES WILL BE ACCEPTED FOR SHADE VARIATION AFTER FITTING HAS BEEN COMPLETED

GUIDELINES FOR MEASURING AND CUTTING OF YOUR WORKTOP

IMPORTANT: ALWAYS DOUBLE CHECK AND MEASURE TWICE AND THOROUGHLY INSPECT THE WORKTOP FOR ANY TRANSIT DAMAGES AND MARKS PRIOR TO FITTING.

If your Kitchen work surface has an acrylic square edge or matching laminate square edge, extra care should be taken on the following areas:

Cutting to Size

Always cut into the edge, and seal the flat front edge as well as the surface joint.

A defuser protection must be fitted to the underside above any appliances - dishwashers/washing machines - to protect the underside front edge joint from heat and moisture.

Measuring & Marking

Once you are sure measurements are exact use a pencil to mark laminate.

Note: Ensure you allow for any edging to be added.

Cut Out Hobs and Sinks

Use the pattern supplied with the sink to mark out. All cut edges must be sealed with water resistant materials, like polyurethane or silicone etc.

Cutting



When using a handsaw, cut through from laminate surface. A sharp finetooth, 10/12 teeth per inch saw is ideal for a perfect cut.



When using a powersaw, cut from underside of worktop. With the worktop face down follow your marking so that the saw teeth cuts towards the laminate surface.

GUARANTEE OF QUALITY

We offer a 10 year guarantee against any manufacturing defects providing that all installation and care instructions are strictly followed subject of course to normal wear and tear. Due to the inherent properties of gloss laminate, we do not accept any responsibility for the performance of the decorative laminate surface. It is therefore imperative that the Gloss Care & Maintenance details are referred to both before and after installation, as misuse of all gloss laminates may affect the appearance of the work surface, particularly with regard to scratching.

DO NOT DESTROY OR THROW AWAY THIS LEAFLET, KEEP FOR FUTURE REFERENCE